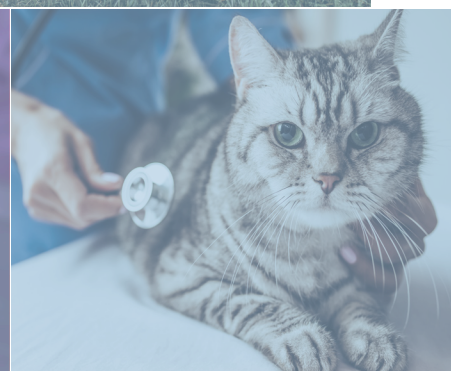
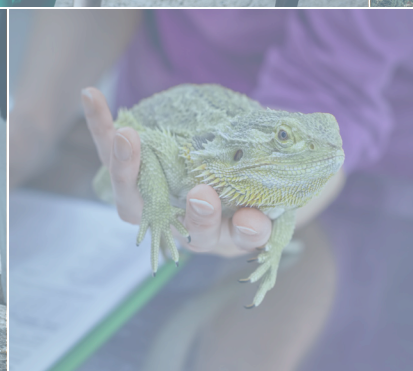
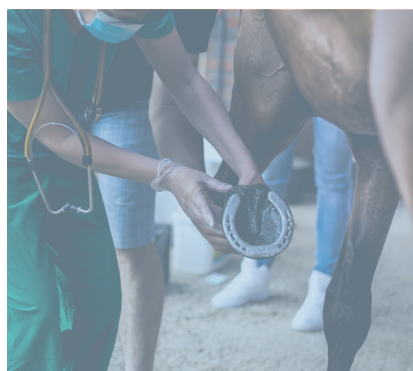
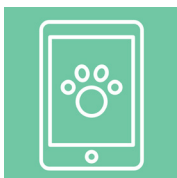


**The world's largest peer-reviewed,  
online veterinary clinical reference source**





## is the best choice for your clinical care!



- **Stay ahead of veterinary knowledge and competition** – Updated weekly, Vetlexicon has the most reliable and current information available.
- **Improved trust and retention** – With over **950** unique owner factsheets across the services, which are written in an owner friendly language to improve client communications.
- **Improved revenue** – By speeding up critical decision making, and the need for referrals is reduced.
- **High volume of information** – A subscription unlocks access to over **25,000** pieces of text and multimedia content.
- **Ensures consistency throughout practice** - By supporting diagnosis, Vetlexicon will unite staff in delivery of the best quality of care.
- **Access anywhere at anytime** – Vetlexicon is available on any internet-enabled device via either IP authentication, or an individual login; with Practice or Individual subscriptions.
- **Support for you and your practice** - Feel confident with your diagnosis and stay motivated to provide high quality care.

# Vetlexicon is the world's largest online clinical reference source

and provides comprehensive, digital content written and peer-reviewed by over **1,000** of the world's leading veterinarians and academics.

It delivers instant, structured, point of care information for the treatment of dogs, cats, rabbits, exotics (guinea pigs, ferrets and reptiles), horses and cattle, wherever and whenever you need it.



*We trust Vetlexicon enough to use it as our primary veterinary information source for our team of several hundred vets and nurses. The information is clear, accessible with a click of a mouse and updated regularly by leaders in their field. Vetstream helps our staff to stay at the cutting edge of veterinary science.*

**Kevin Morris - Managing Partner, Medivet**

*As a WSAVA Education Partner, Vetstream enables us to deliver on our goals of raising global standards of veterinary care through the provision of Vetlexicon's educational resources at preferential rates, and through supporting our member associations, which have such a vital role to play in developing the profession in their countries.*

**Siraya Chunekamrai - Vice President of the World Small Animal Veterinary Association**



*IVC needed a clinical resource that is easily accessible and current, providing practical, evidence-based advice to assist clinicians without risking the clinical autonomy of practices. Vetlexicon meets these needs and we look forward to improving our support to practices with this excellent resource. We are proud to provide the highest levels of support via IVC practices in the UK and Ireland.*

**Paul Cowling - Independent Vetcare CEO for UK and Ireland**



# How can

HOME TREAT LEARN COMMUNICATE ABOUT US NEWS CONTACT US

CANIS FELIS LAPIS EXOTIS

Lapis ISSN 2398-2969

## Myxomatosis

Contributor(s): Aidan Raftery, Susan Brown, Anna Meredith, Bairbre O'Malley, Richard Saunders

INTRODUCTION PATHOGENESIS DIAGNOSIS TREATMENT PREVENTION SEQUELAE

### Introduction

- Italian microbiologist Sanarelli first reported myxomatosis in 1898 when a laboratory rabbit colony he had imported into Uruguay for public health research suddenly died of an extremely infectious disease, caught from native rabbit species which had co-evolved with the virus and were not clinically infected by it. The myxoma virus was identified in the 1930s and subsequently used in biological warfare against the rabbit population of Australia and France in the 1950s. It spread from France to the UK in 1953 where it decimated the European wild rabbit population.
- Cause:** myxoma virus (a poxmyxoma virus) [Myxoma virus](#) is spread by biting flies or fleas and by mechanical vectors such as non-biting insects, bedding and food. Direct spread via respiratory secretions between rabbits is possible, but an uncommon route of spread.
- Signs:** severe edema of lips, eyelids and genitals, pyrexia, depression, chronic localized skin nodules, up to 100% mortality in acute systemic form, much lower in the more chronic nodular form which only affects skin.
- Diagnosis:** clinical signs, viral testing may be performed.
- Treatment:** supportive and palliative only.
- Prognosis:** very poor in the acute systemic form. Good to excellent in the more chronic skin form.

Print off the Owner factsheet [Myxomatosis - myxy](#) and [Vaccinations - essential protection](#) to give to your clients.

### Presenting signs

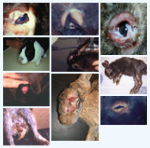
- In the acute form, the initial signs are lethargy and conjunctival erythema with watery or milky ocular discharge progressing rapidly to severe edema of

### Related content

#### Text articles

- [Buprenorphine](#)
- [Dyspnea](#)
- [Euthanasia](#)
- [Eye: epiphora](#)
- [Hospitalization/nursing care](#)
- [Imidacloprid](#)
- [Myxoma virus](#)
- [Otitis externa](#)
- [Pneumonia](#)
- [Post-mortem technique](#)
- [Rhinitis - sinusitis](#)
- [Ringworm](#)
- [Spilopsyllus cuniculi](#)
- [Treponema cuniculi](#)
- [Viral hemorrhagic disease 1](#)
- [Viral hemorrhagic disease 2](#)

#### Images




#### Owner Factsheets

- [Myxomatosis - myxy Owner Factsheet](#)
- [Vaccinations - essential protection Owner Factsheet](#)



## Intuitive, easy to use interface

with bulleted key points, highlighted tips and warnings, links to related text, images, videos and sounds.



## Step-by-step guide to surgical procedures

helping you prepare using the extensive range of images and videos detailing equipment, procedures and possible complications. Explain to owners the procedure proposed for their animal.

HOME TREAT LEARN COMMUNICATE ABOUT US NEWS CONTACT US

CANIS FELIS LAPIS EXOTIS

Felis ISSN 2398-2950

## Tail amputation 04: tail removal

Contributor(s): Noel Fitzpatrick



### Related content

#### Text articles

- [Tail: amputation](#)

#### Images



Want more related items, why not contact us

1. Disarticulate the tail at an intervertebral space.
2. Attention to hemostasis may be required at this point, but usually there is little bleeding due to previous distraction and recoil of vessels.



## Detailed formulary

to help you research dosage, potential side effects, active ingredients and contra-indications so you can prescribe and administer with increased confidence.

HOME TREAT LEARN COMMUNICATE ABOUT US NEWS CONTACT US

CANIS FELIS LAPIS EXOTIS

Canis ISSN: 2398-2942

## Spironolactone

Contributor(s): Fraser Broadfoot

INTRODUCTION USES ADMINISTRATION PRECAUTIONS ADVERSE REACTIONS

### Introduction

#### Name

- Spironolactone.

#### Class of drug

- Aldosterone antagonist.

#### Uses

#### Action

- Binds directly to mineralocorticoid receptors on the heart, blood vessels and kidney, and competitively inhibits aldosterone.
- Aldosterone levels are increased in dogs with heart failure and is known to cause a number of harmful effects including:
  - An increase in the sympathetic nervous system: this abnormally increases the heart rate and places additional strain on the failing heart.
  - Fibrosis and dysfunction (narrowing) of the blood vessels: this

### Related content

#### Text articles

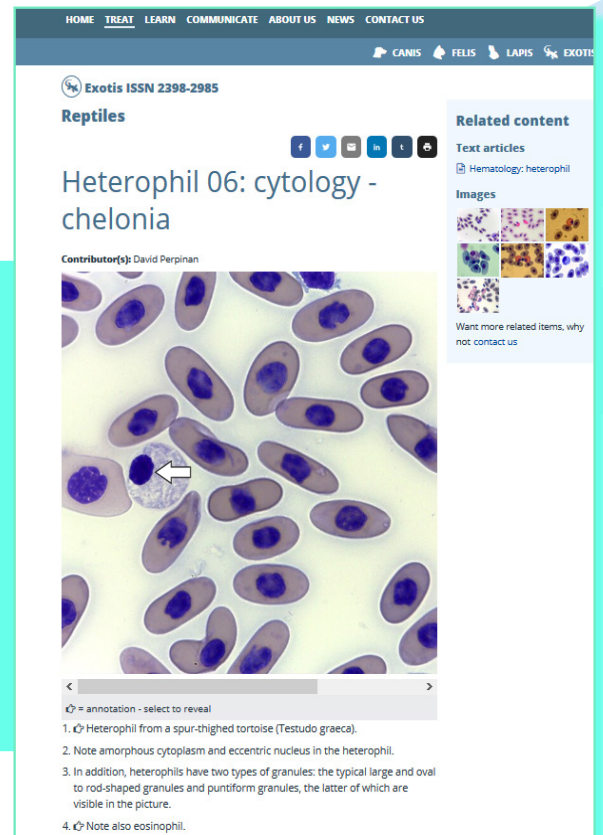
- [ACE inhibitor: overview](#)
- [Atrioventricular valve dysplasia](#)
- [Digitoxin](#)
- [Digoxin](#)
- [Endocardiosis: tricuspid valve](#)
- [Furosemide](#)
- [Heart: congestive heart failure](#)
- [Heart: mitral valve degenerative disease](#)
- [Hyperkalemia](#)
- [Hypertension](#)
- [Liver: chronic disease - overview](#)
- [Liver: idiopathic fibrosis](#)
- [Pericardium: constrictive disease](#)
- [Pimobendan](#)
- [Potassium chloride - gluconate](#)
- [Therapeutics:](#)



# Vetlexicon help you?



Thousands of interactive  
images, videos, sounds and  
illustrations  
with most images having animated bullets,  
identifying particular features, allowing you  
to share your expertise, put clients' minds  
at rest and also support staff training.



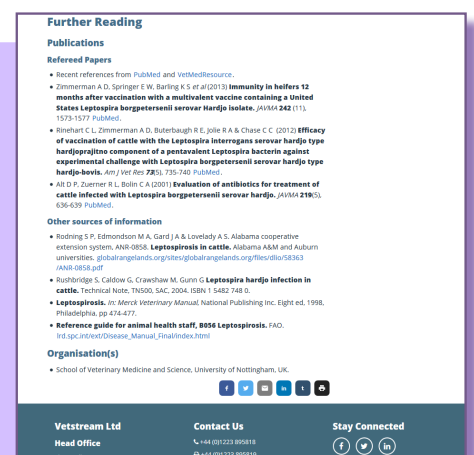
## Extensive collection of Owner Factsheets

throughout the content, helping to  
enhance your client communication  
and relationships.



## Cross-linked to VetMed Resource and PubMed, and feeds to the latest published research

so you have access to the abstracts and primary literature,  
enabling a more evidence-based approach for your clinical work.



Vetstream Ltd  
Three Hills Farm  
Bartlow  
Cambridge  
CB21 4EN, UK

Tel: +44 (0) 1223 895818  
Fax: +44 (0) 1223 895819  
  
enquiries@vetstream.com  
www.vetstream.com



canis



felis



lapis



exotis

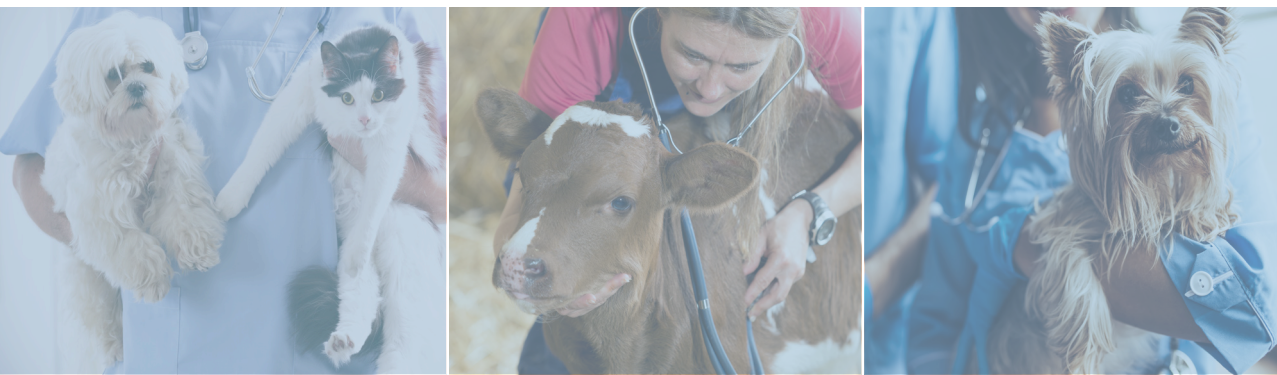


equis



bovis

Diseases	1061	697	201	247	814	313
Bacteria, Viruses & Parasites	156	137	63	N/A	100	79
Surgical & Diagnostic Techniques	371	297	93	31	382	104
Formulary	568	545	122	320	305	84
Breeds/Species	218	52	61	70	74	30
Miscellaneous	768	669	116	127	305	304
Images	4685	2531	937	1031	3531	1623
Videos	90	13	10	25	40	36
Owner Factsheets	246	197	116	185	150	45
TOTAL	8163	5138	1719	2036	5701	2618



@VetstreamLtd  
 @Vetstream  
 @Vetstream\_ltd  
 /Vetstream-Ltd  
 /Vetstream

You can trial the Vetlexicon services, with no-obligation, by visiting  
[www.vetstream.com/products/subscription](http://www.vetstream.com/products/subscription)